

PRODUCT DATA SHEET

16 Cores IP68 Fiber Optic Distribution Box

Technical index

| | |
|-----------------------|------------------------------------|
| Model No. | NT-OTB-04P16DX68 |
| Color | Black, White.. |
| Capacity | 96 Cores (24C × 4PCS Splice Trays) |
| Protection Level | IP68 |
| Inlet/outlet | 4+16 |
| Material | PP+GF |
| Dimension(L*W*D,MM) | 385*240*128 |
| Outer box size(MM) | 520*420*310 |
| Net weight /1 PC(MAX) | 3.4 kgs |
| Gross Weight/1 Carton | 15.4 kgs |
| PCS/1 Carton | 4 pcs |



Loaded Recommendations

Loaded with Mini PLC Type1: 2 pcs of 1x8 Module PLC Splitter

Type2: 1 pc of 1×16 Module PLC Splitter

Empty (Without Mini PLC) Blank



2 pcs 1*8 Module PLC



1 pc 1*16 Module PLC

Overview

This box is used as a termination point for the feeder cable to connect with drop cable in FTTX communication network system.

It intergrates fiber splicing, splitting, distribution, storage and cable connection in one unit. Meanwhile, it provides solid protection and management for the FTTX network building.

Features

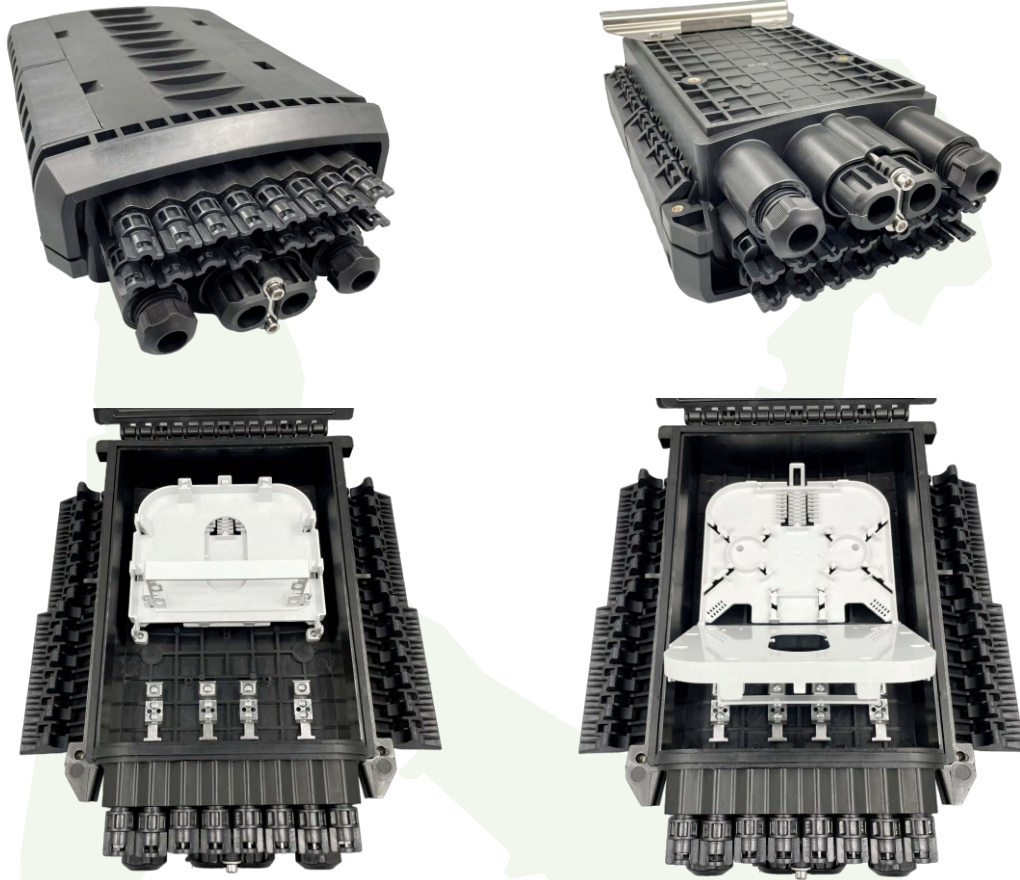
- The body is made of high quality engineering plastic with good strength, Total enclosed structure.;
- Material: PP+GF wet-proof, water-proof, dust proof, antiaging, protection level up to Ip68.
- Clamping for feeder cable and drop cable, fiber splicing, fixation, storage distribution ... etc all in one.
- Cable, pigtails, patch cords are running through own path without disturbing each other, cassette type SC adaptor .installation, easy maintenance.
- Distribution panel can be flipped up, feeder cable can be placed in a cup-joint way, easy for maintenance and installation.
- Box can be installed by the way of wall-mounted or poled mounted, suitable for both indoor and outdoor uses.

Applications

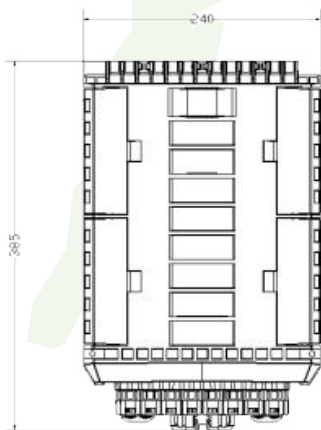
- Wall mounting and pole mounting installtion
- FTTH pre-installation and filed installation
- 1 input cable port for un-cut cable from diameter from10~17.5mm. 2 output cable ports for cable diameter from 8~17.5mm. 16 output cable ports for cable diameter less than 4mm.



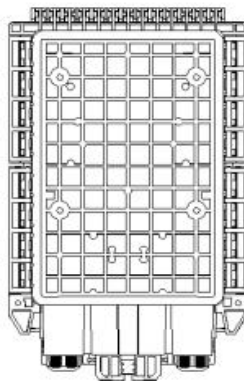
Pictures for reference



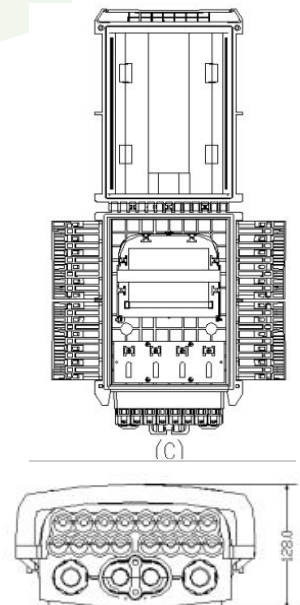
The dimension diagram:(mm)



Pic#1: Top View



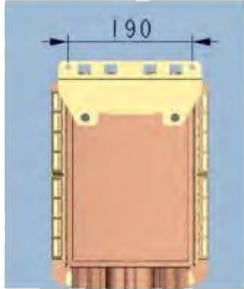
Pic#2: Side View



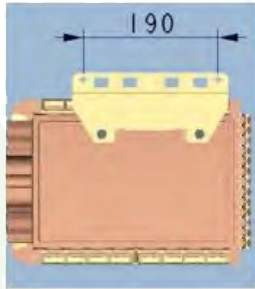
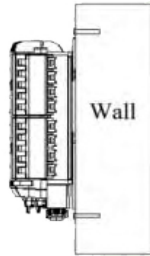
Pic#3: Front View



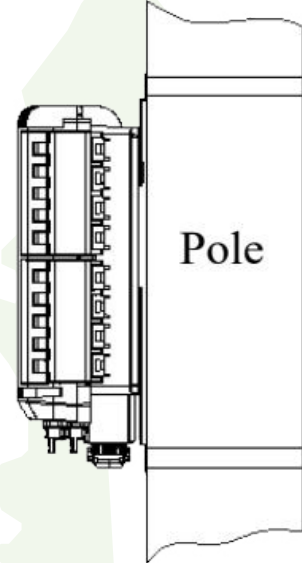
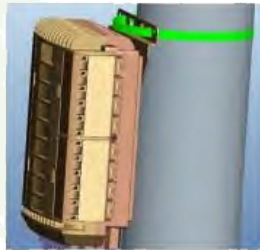
Installation method



Wall mounting



Pole mounting



Standard Accessories

- Splice cassette and cable management tool.
- Installation nuts and bolts, protection sleeves
- Hose clamp, cable tube, wreath, cover holder
- Rubber seal for cable entrance



Standard Accessories

- Installation nuts and bolts, protection sleeves

